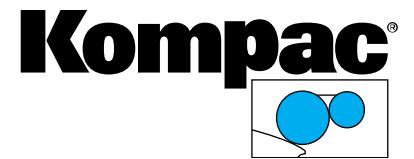


Kompac[®]



Date of Installation: _____

Unit Serial Number: _____

GST13

Parts Catalog #90226 (Rev. D)

Gestetner Press Models:

313

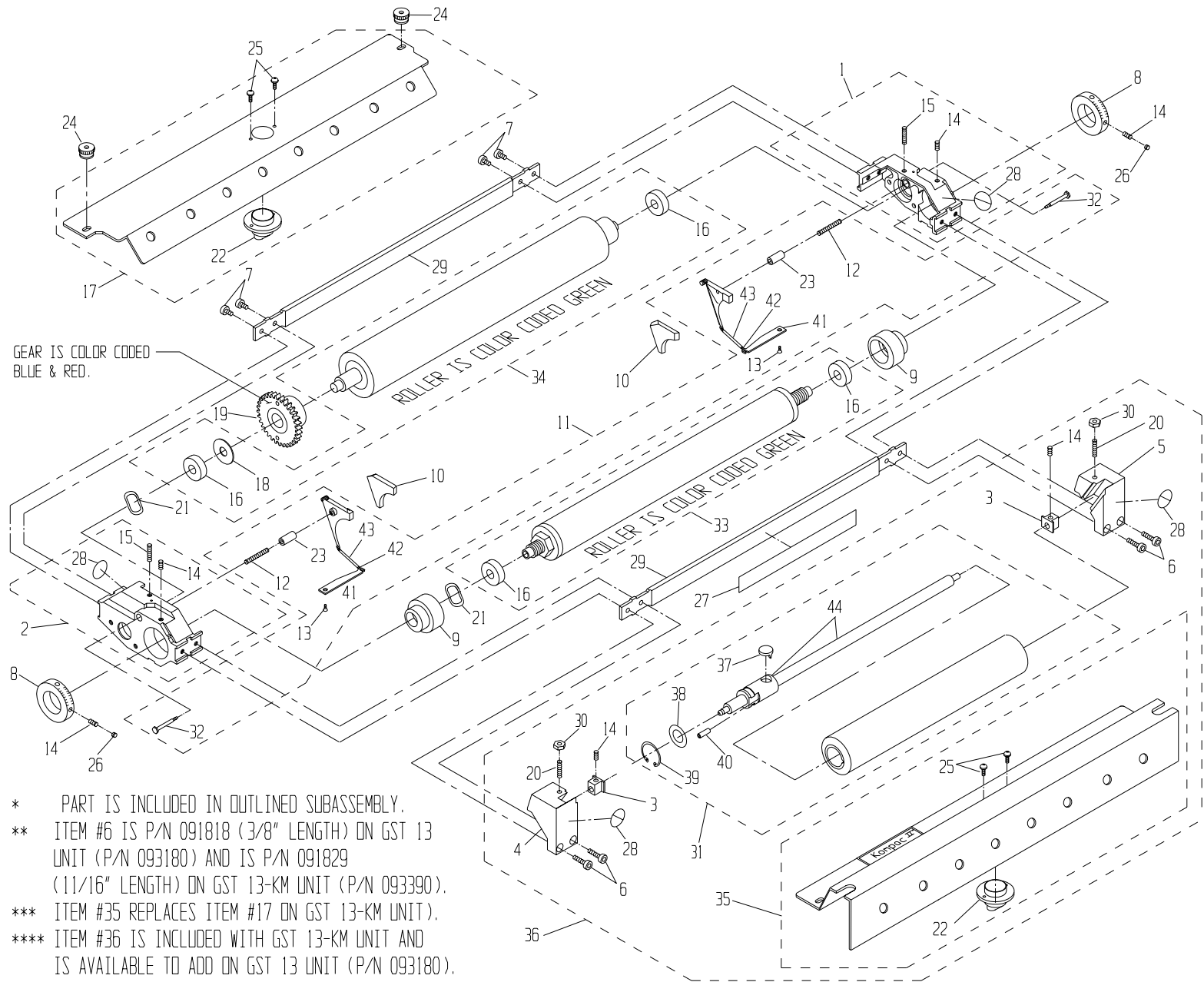
Kompac Technologies, LLC
7 Commerce Street
Somerville, NJ 08876
P: (800) 541-5702 (Toll Free U.S. & Canada)
P: (908) 534-8411
F: (908) 534-8412
info@kompactech.com
www.kompactech.com

Last updated March 2010

GST 13 PARTS CATALOG

P/N 090226

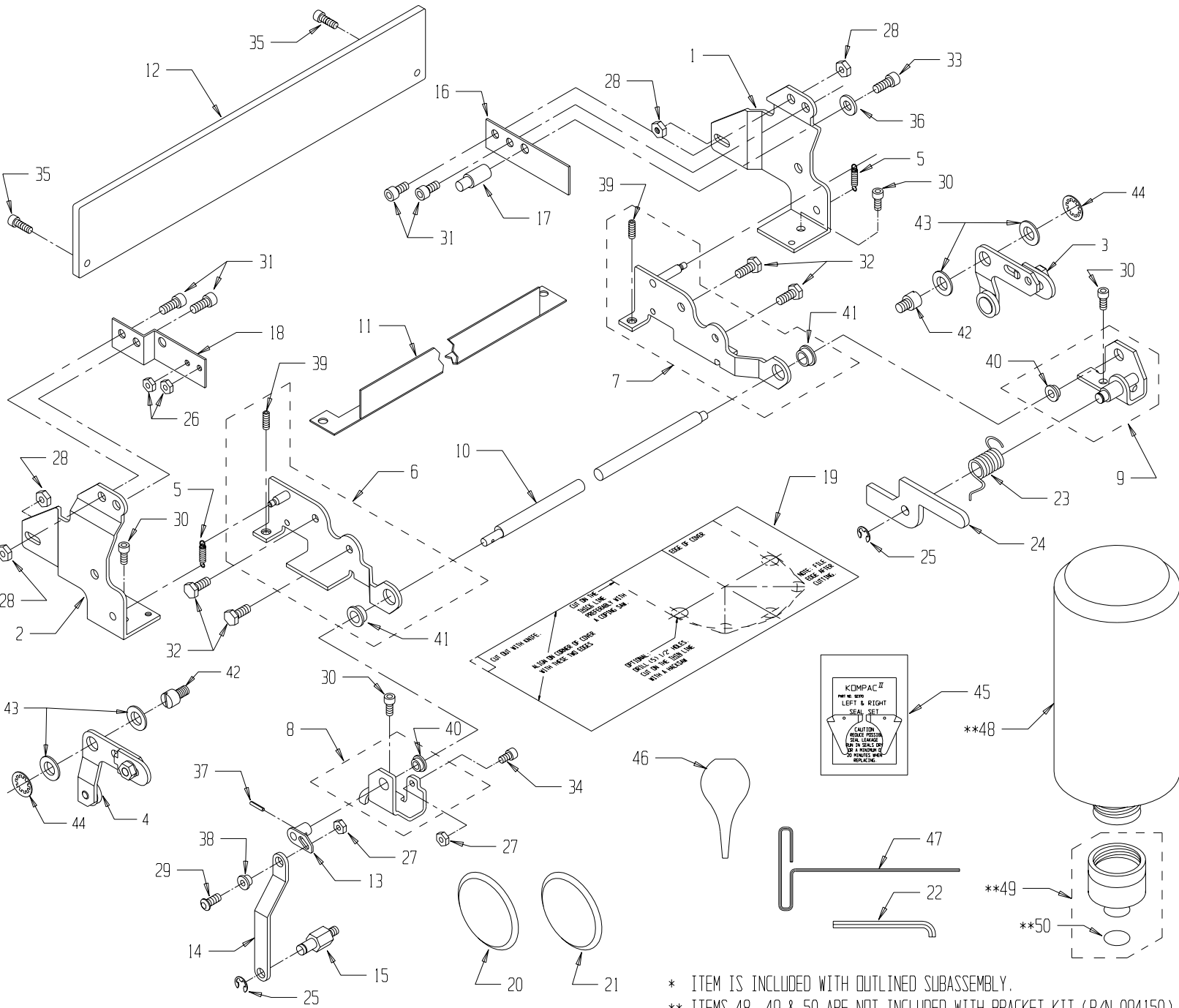
REV	DESCRIPTION	ECN	BY	DATE
-	CREATED NEW DWG, WAS WITH GST 11 AS P/N 90222	1122	MJC	8-4-95
A	REPLACED P/N 091306 WITH 081306	1207	MJC	7-9-96
B	ADDED SHAFT ASSY S.S. 091261	1252	BS	1-31-97
C	ITEM 36 WAS 96520 MODEL 20 ITEM 37 P/N 91117 WAS 91111	1274	BS	4-30-97
D	ITEM #31 WAS 081306	1411	ZZ	6-15-98



ITEM#	PART #	DESCRIPTION	QTY
44	091261	SHAFT ASSY S.S.	*
43	092259	SPRING COVER	*
42	092236	BACKING PLATE TAB SPRING	*
41	092234	BACKING PLATE TAB	*
40	091949	SPRING PIN	*
49	091997	OSC. RETAINING CLIP	*
48	091965	OSC. RETAINING WASHER	*
37	091117	OSC. DRIVE SHAFT FOLLOWER	*
36	096560	KOLORMATE MODEL 60	****
35	091350	13" OSC. COVER ASSY	***
34	092470	13" FORM ROLLER W/B	1
33	092460	13" METERING ROLLER W/B	1
32	092303	SHOULDER SCREW	*
31	091306	ASSY, 13" OSC., LONG STROKE	1

30	091982	#10-32 NUT	2
29	092496	13" TIE BAR	2
28	092601	INWARD NIP SYMBOL	2*
27	092494	WARNING DECAL	1
26	091810	#10-24 X 1/8 SLOT SET SCREW	2
25	091806	#6-32 X 3/8 PHIL. HD SCREW	*
24	092691	COVER NUT	2
23	092304	GUIDE PIN	*
22	092604	NOZZLE	*
21	092491	WAVE WASHER	2
20	091851	#10-32 x 1 SET SCREW	2
19	092930	GST 13 GEAR CLUTCH ASSY	1
18	092415	THRUST WASHER	*
17	092620	13" COVER ASSEMBLY	***
16	092401	BEARING	*

15	091814	#10-24 X 3/4 STUD	*
14	091811	#10-24 X 1/4 SET SCREW	4*
13	091802	#3-48 X 1/4 FLAT HD SCREW	*
12	092238	COMPRESSION SPRING	*
11	092290	BACKING PLATE KIT (L & R)	1
10	092370	SEAL SET (L & R)	1
9	092291	ECCENTRIC	2
8	092222	METERING GAUGE	2
7	091818	#10-24 x 3/8 SOCKET HD SCREW	4
6	**	#10-24 SOCKET HD CAP SCREW	4
5	091017	R.H. OSC. END BLOCK	1
4	091018	L.H. OSC. END BLOCK	1
3	091219	ALIGNMENT BLOCK	2
2	092210	L.H. END FRAME ASSY	1
1	092200	R.H. END FRAME ASSY	1



* ITEM IS INCLUDED WITH OUTLINED SUBASSEMBLY.
 ** ITEMS 48, 49 & 50 ARE NOT INCLUDED WITH BRACKET KIT (P/N 094150).

ITEM	PART NO.	DESCRIPTION	QTY.
50	92765	O-RING	*
49	92760	DISPENSING VALVE ASSY	**
48	92771	CALIBRATED BOTTLE	**
47	90755	3/32" WRENCH	1
46	92778	KOMPAC SYRINGE	1
45	92370	KOMPAC SEAL SET (L & R)	1
44	91747	CIRCULAR PUSH-ON	2
43	91739	.442 x .750" WASHER	4
42	90934	THREADED STUD	2
41	93816	FLANGE BEARING	*
40	94192	FLANGE BEARING	*
39	91847	10-32x3/4 OVAL POINT SET SCREW	*
38	93754	ATF LOCKOUT BUSHING	1
37	91940	3/32 x 1/2" ROLL PIN	1

ITEM	PART NO.	DESCRIPTION	QTY.
36	91962	#12 WASHER	1
35	91811	10-24 x 5/8 SOCKET HD CAP SCW	2
34	91818	10-24 x 3/8 SOCKET HD CAP SCW	1
33	91895	1/4-28 x 1/2 SOCKET HD CAP SCW	1
32	91867	1/4-20 x 1/2 HEX HEAD SCREW	4
31	91876	1/4-20 x 1/2 SOCKET HD CAP SCW	4
30	91875	1/4-20 x 3/8 SOCKET HD CAP SCW	4
29	91819	10-24 x 1/2 BUTTON HD CAP SCW	1
28	91972	1/4-20 LOCK NUT	4
27	91968	10-24 LOCK NUT	2
26	91967	8-32 LOCK NUT	2
25	91994	5/16" E-RING	2
24	93621	PLATE CLAMP PAWL	1
23	93626	PLATE CLAMP SPRING	1
22	93708	3/16" ALLEN WRENCH	1
21	93749	2" DIA. PLUG	1
20	93748	2-1/8" DIA. PLUG	1
19	94151	GST 13 SAFETY COVER TEMPLATE	1

ITEM	PART NO.	DESCRIPTION	QTY.
18	93517	R.H. SAFETY COVER BKT	1
17	93515	SAFETY COVER PIN	1
16	93516	L.H. SAFETY COVER BKT	1
15	93519	GST LOCKOUT PIN	1
14	93518	GST LOCKOUT LINK	1
13	93710	ATF LEVER ASSY	1
12	94152	GST 13 INKER SAFETY COVER	1
11	94156	GST 13 PINCH GUARD	1
10	94154	GST 13 ECCENTRIC SHAFT	1
9	94190	GST 13 R.H. PIVOT BKT ASSY	1
8	94200	GST 13 L.H. PIVOT BKT ASSY	1
7	94170	GST 13 R.H. MOUNTING BKT ASSY	1
6	94160	GST 13 L.H. MOUNTING BKT ASSY	1
5	93553	EXTENSION SPRING	2
4	90930	LIFT LINK ASSEMBLY, OP-SIDE	1
3	90940	LIFT LINK ASSEMBLY, NON-OP SIDE	1
2	94180	GST 13 L.H. INKER BRACKET	1
1	93688	R.H. INKER BRACKET	1